



TERRA MOTORS

No.1 Electric Vehicle Company from JAPAN



KYORO

ZINDAGI KO DO NAYI
RAFTAAR!!!

TOP SPEED

55⁺KM

ideal for city
& mixed terrains

EXCEPTIONAL RANGE

200^{KM}

on a single
charge

QUICK ACCELERATION

5.6^{SEC}

instant launch
to 28 km/h

SUPERIOR GRADEABILITY

22%

incline capability
even under full load

ए.आर.ए.आई
ARAI
ए.आर.ए.आई.ए.आई.ए.आई.




JAPAN'S NO.1 IN JUST 2 YEARS

Founded in Japan, Terra Motors Corporation is a global leader in electric vehicle innovation, dedicated to transforming transportation for a better future.

The name "Terra," meaning "world" in Latin, embodies our mission to tackle global challenges and create a meaningful impact worldwide.

With a strong presence across Asia, our founder, **Mr. Toru Tokushige**, wants to foster innovation and find solutions by integrating diverse fields. We brought that same spirit of Japanese excellence to India in 2014.

For over a decade, we've been designing and manufacturing electric vehicles specifically for Indian roads. Today, with a comprehensive portfolio that includes 3-wheeler EVs, EV financing and charging solutions, Terra Motors is accelerating EV adoption and building a thriving **EV ecosystem** around it in India.

| | |
|--|--|
|  TERRA MOTORS | Terra Motors India Pvt. Ltd. Terra Financial Services Pvt. Ltd. |
|--|--|

| | |
|--|--|
|  | Terra Charge Company (Thailand) Co. Ltd. Terra Charge India Pvt. Ltd. Pt Terra Charge Indonesia |
|--|--|

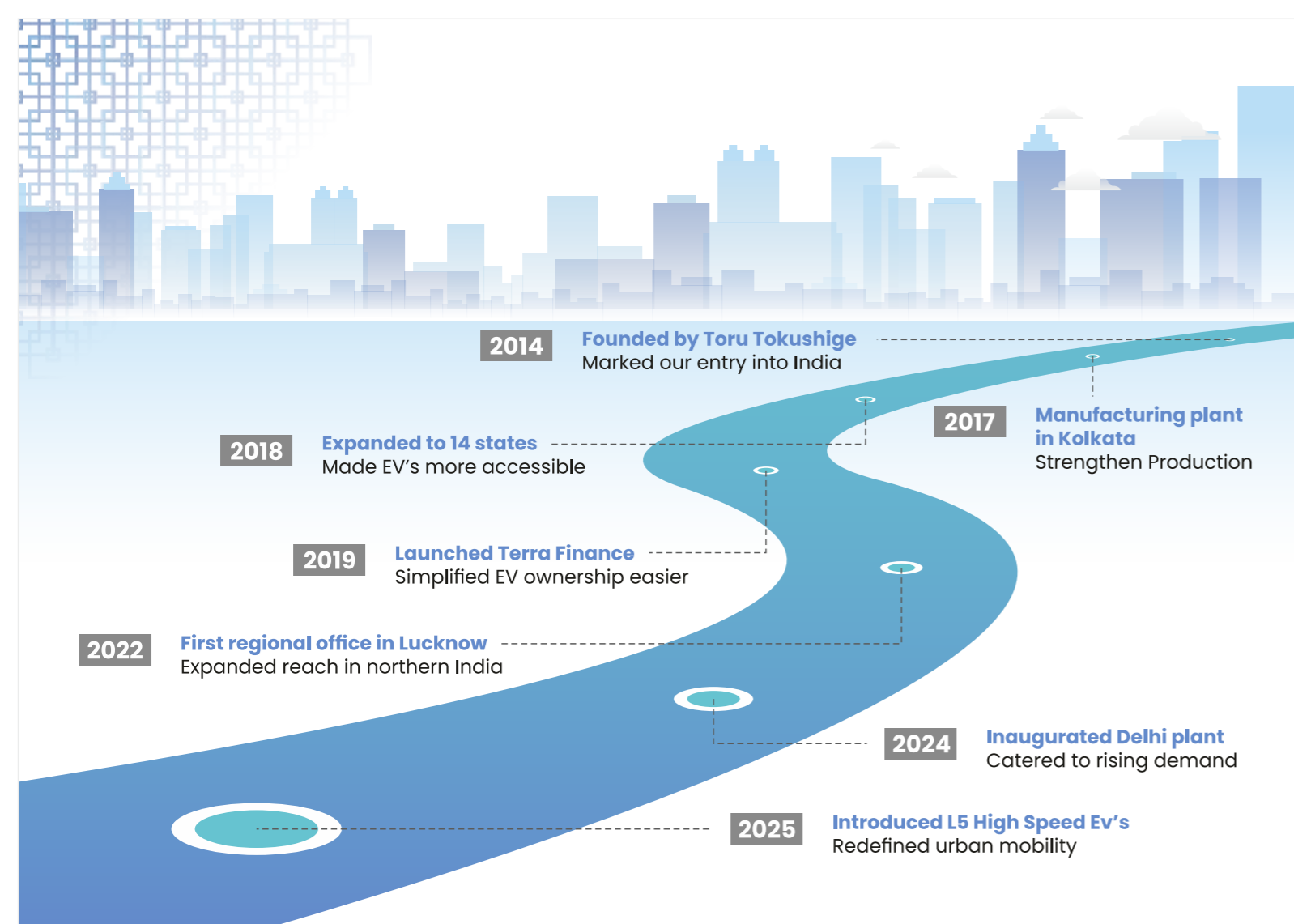
| | |
|--|--------------------------------|
|  TerraDrone | Terra Drone Corporation |
|--|--------------------------------|



MR. TORU TOKUSHIGE

FOUNDER

A graduate of Kyushu University and MBA holder from Thunderbird School of Global Management, he began his career in corporate planning before moving to Silicon Valley to support startups. In 2010, he founded Terra Motors, which became Japan's leading electric motorcycle brand. He later launched Terra Drone, a global leader in drone and Urban Air Mobility technologies, transforming industries through innovation in aerial solutions.



KYORO+



KYORO+ isn't just an electric auto. It's a **new-age mobility solution** crafted with a purpose, **rooted in Japan and made to move India.**

Derived from the Japanese word "Kyro" (キヨロ), which expresses agility, and a quick glance or move, our vehicle lives up to its name — smart, swift, and always ready to move forward.



Expansive Seating and Large Luggage Compartment

Enjoy generous seating with ample legroom for a more comfortable and relaxing ride, along with a spacious boot for hassle-free storage & convenient travel

Exceptional Range

Achieve an impressive range of up to 200 km on a single charge, setting a new benchmark for daily commuting and logistics operations



Powerful Performance

Delivering rapid acceleration from 0 to 28 km/h in just 5.6 seconds. Exceptional 22% gradeability under full load

Top speed of 55 km/h for powerful, confident performance across all terrains



Motor

Feel the surge of power with **PMSM Motor & Controller**

IP67 rated motor is made to with stand India's diverse climate

Flood Resistant Monsoons or dry heat, Kyoro keeps going strong



Speed 55+ KM

Glide through traffic & congestion easily

Gradeability

2 speed Gearbox for higher Gradeability for upto 22%

Making hilly roads & flyovers feel flat

Enhanced Pickup ensures you accelerate swiftly & smoothly

BUILT FOR + MOMENTUM

High Speed, High Performance



Range – With 200km range on a single charge, Kyoro gives you the freedom to ride farther without constantly checking your battery bar

Avoid Range anxiety with high-capacity **11.7 kWh battery**

Charge up to **0–80% in just 3 hrs 15 mins**, so you're always ready to roll—no waiting around

BUILT FOR + CONFIDENCE

No Range Anxiety Just Reliability



Count your savings! It runs **significantly cheaper than petrol or diesel**, giving you better returns every kilometer

Stay worry free with **an intelligent safety alarm** system that protects the battery against overheating beyond **55°C**

Battery Alarm
Alerts you of overheating risks

Hazard Switch
Instant signaling in emergencies

Reserve Mode
Extra **13 km** reserve mileage when the battery runs low

5-Year / 1,20,000KM Warranty Long-term peace of mind, mile after mile

3 Free Services Hassle-free maintenance to get you started right

Pan-India Service Network Reliable support, wherever the road takes you

Spare Parts Readily Available Across our entire dealer network

Dedicated Service Bays at Dealerships Professional care, always within reach

BUILT FOR + PEACE OF MIND

Strong Warranty, Stronger Trust



WHAT COMES WITH THE VEHICLE | TOOLKIT | USER MANUAL | SERVICE MANUAL

BUILT FOR+ PROGRESS

From Japan to India



Strong Built

Aerodynamically Designed Metal Front Facia for better Protection



Smooth Ride

Independently swiveling arm with Helical Suspension for ride quality



All-Weather Ready

Anti-Rust powder coated metal parts for longer durability



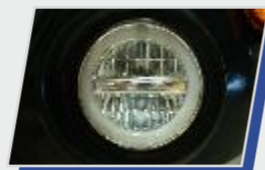
Save Energy on Braking

Hydraulic central Braking System with Regenerative Braking



Spacious

Ergonomically Designed Seating makes it spacious & comfortable



LED Light

Higher energy efficiency & longer range

BUILT FOR+ EASY OWNERSHIP

Own Today, Pay Later



Zero Down Payment

Drive home your Kyoro with no upfront cost

Powered by Terra Finance

In-house financing designed for your convenience

Exclusive Benefits for Terra Customers

Simple, fast & flexible

TECHNICAL SPECIFICATIONS

| Specifications | Unit | Details |
|------------------------------|------|--------------------|
| Vehicle Type | | L5M |
| Dimensions (L X W X H) | mm | 2810 X 1378 X 1830 |
| Speed | km/h | 55 |
| Wheel Base | mm | 2080 |
| Wheel size (front) | | 4 – 12" |
| Wheel size (rear) | | 4 – 12" |
| Seating: 5 No. of Passengers | No | D+3 |
| Vehicle kerb weight | kg | 450 |
| Vehicle gross weight | kg | 750 |
| Climbing Capacity | % | 20 |
| Range (ARAI) | km | 200 |
| Reserve Battery Capacity | km | 13 |

| Specifications | Unit | Details |
|-------------------------|------|--------------------|
| Voltage rating | V | 48 |
| Rated power | kW | 5.5 |
| Peak power | kW | 8.0 |
| Battery Type | | Fixed |
| Battery Chemistry | | LFP |
| Battery Capacity | kWh | 11.7 (Usable 10.5) |
| Battery Nominal Voltage | V | 51.2 |
| Charger Capacity | A | 50A |
| Time for Charging | hr | 4 to 5 |
| Ground Clearance | mm | 180 |
| Cluster | | Digital |

| Specifications | Details |
|--------------------|--|
| Transmission | Articulated trailing arm Transmission |
| Differential | Constant Mesh 2 Stage Reduction With Integrated Differential |
| Gear box | Highly Durable and Sturdy 2 speed Gearbox with Clutch mechanism |
| Brake type | Hydraulic Drum Brake |
| Suspension (Front) | Hydraulic Telescopic Shock Absorber With Helical Compression Spring and Damper |
| Suspension (Rear) | Hydraulic Telescopic Shock Absorber With Helical Compression Spring and Damper |
| Motor Type | PMSM |

Business Address :

Terra Motors India Pvt. Ltd.
Plot No.9, Sector-8, IMT Manesar, Gurugram-122051

Contact Number :

+91 9147752921

Head Office :

Satesait Tower, 8th floor, GP Block, E-2-3, Sector V,
Salt Lake, Bidhan Nagar, Kolkata, West Bengal-700091

E-mail Id :

ev.auto@terramotors.co.jp